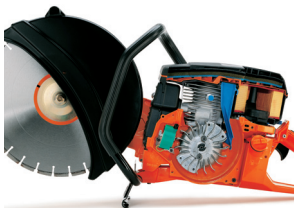


Husqvarna K 950

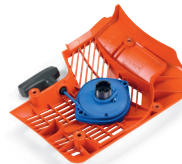
When it comes to petrol-powered cutters for work duties that demand power, with blades up to 400 mm (16") and cutting depths up to 145 mm (6"), our Husqvarna K 950 is in a class of its own. Despite large and powerful engine, the cutter is very easy to handle and flexible to use. The K 950 has by far the best power-to-weight performance on the market.



Active Air Filtration™ - Centrifugal air cleaning in three stages increases service life and extends the intervals between services.



SmartCarb™ - Built-in automatic filter compensation, maintains high power and lowers fuel consumption.



DuraStarter™ - Dust sealed starter with durable starter cord reduces the risk of downtime and increases reliability and service life.



EasyStart - Ensures 50% easier starting by reducing the compression in the cylinder during starting.

Features.

- Reversible cutting arm for working closer to walls and the ground.
- Sealed transmission reduces the wear and slippage risk.
- Self-lubricating clutch bearings for extended work life.
- Easy-adjust blade guard
- The flow can be adjusted during operation and the water nozzle is optimally positioned.
- Replaceable arbor bushing
- Starter cord with greater durability produces unsurpassed reliability.

Technical Data.

SPECIFICATIONS	Husqvarna K 950
Engine	Air-cooled 2 stroke engine
Power	6.1 hp
Cylinder displacement	5.7 cu.inch
Sound level	103 dB(A)
Sound power level, LWA	116 dB(A)